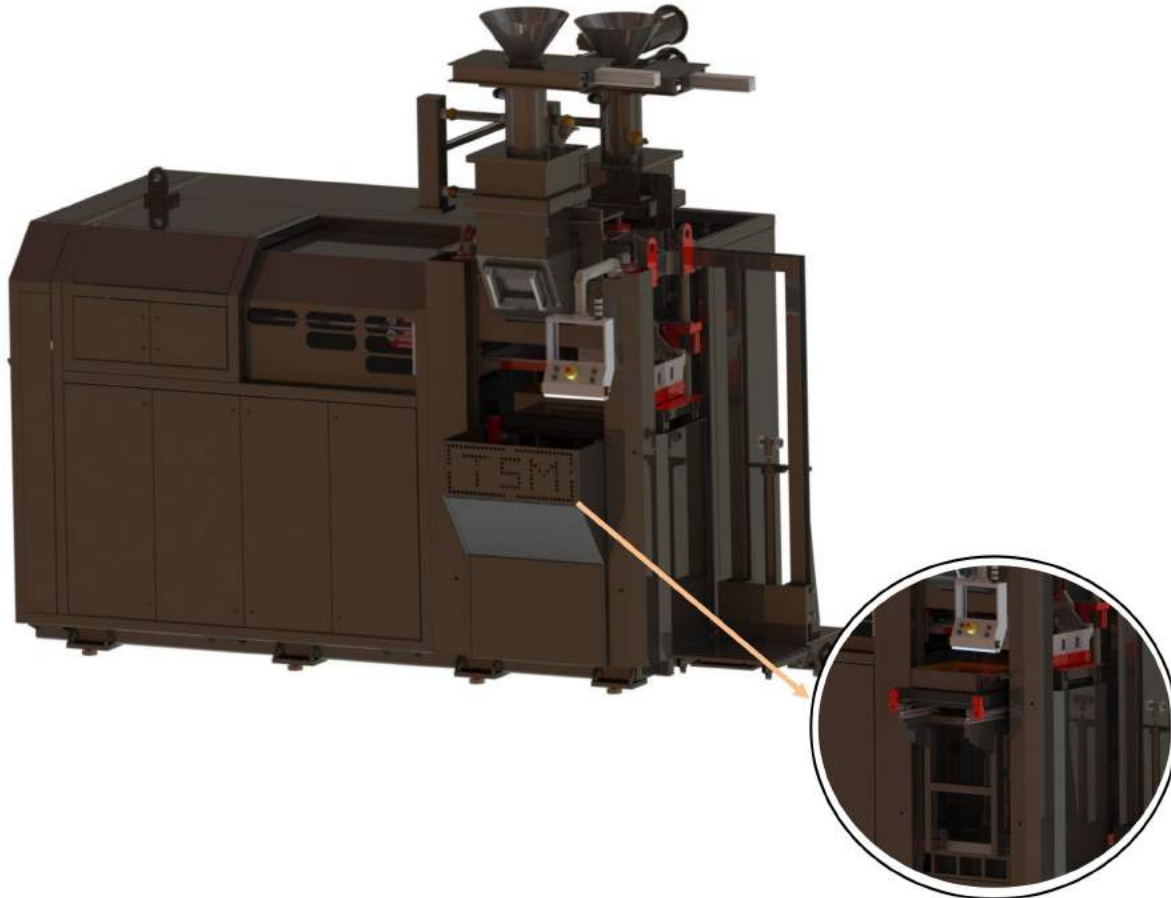


# 500x600 AUTOMATIC GREENSAND MOLDING MACHINE



MACHINE FEATURES	VALUES
Total Sand Height	300 mm-400 mm
Machine Dimensions (Excluding Elevator)	1900mm x 4500mm x 4000 mm
Elevator System	Hydraulic
Capacity	80 Pieces (Cycle 45 sec)
Model Cleaning System	Manual (Air Gun)
Model Heating System	Infrared Bulbs (Auto-Manual)
HMI	9 inch SIEMENS or 15 inch EXOR
Software	Compatible with Industry 4.0
Software Language	Turkish-English
PLC	SIEMENS S7-1200 or MITSUBISHI FX5U
Switchgear Automation Products	SIEMENS or EATON
Hydraulic Unit	BOSCH REXORT
Machine Blowing System	Separate Blowing for Upper and Lower Degree
Working Mode	Auto- SemiAutomatic - Manual
Machine Failure Status	Fault Information and Light Warning
Machine Total Power	35 kw
Machine Movements	Speed and Direction Proportional Control
Hydraulic Oil Volume	1000 lt
Maximum Press Force	50 tons (under) - 50 tons (upper)
Machine Column Shafts	Induction Chrome Shaft
Machine Tables	Sfero Molding
Machine Table Bearings	14 Tinned Yellow
Machine Lubrication System	Auto-Manual
Machine Working Way	Spades ve Without Spades
Mold Hardnesses	90 Shore
Blowing Pressure	4-7 Bar
Work safety	Light Barrier-Double Hand Button
Mold Plate Thickness	300-400 mm
Machine Net Weight	14 Ton
Machine Location Information	Lower Press, Lower Grade, Model Push, Upper Grade, Upper Ram Head, In-Cylinder Linear Ruler
Degree highlight	✓
Sand mold weight	180 kg (Max Sand Height)

## PANEL PLACEMENT



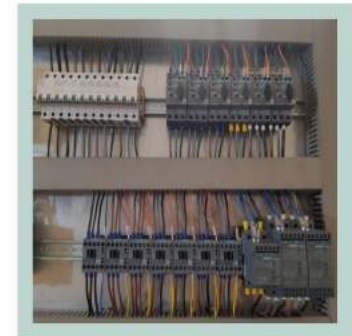
(1)



(2)



(3)



(4)

(1) SIEMENS SINAMIC V20 DRIVER GROUP

(2) HUBBOX REMOTE ACCESS DEVICE  
SIEMENS ETHERNET SWITCH  
SIEMENS SECURITY PLC  
SIEMENS POWER SUPPLY  
SIEMENS S7-1200  
ADDITIONAL MODULES

(3) SIEMENS INSURANCE GROUP  
SIEMENS ENGINE PROTECTION SWITCHES  
SIEMENS SOFT STARTERS

(4) MOSFET CARDS

(5) CAM FUSES - DC 24 V RELAYS - PHASE PROTECTION RELAY



(5)

## HYDRAULIC UNIT



(1)



(2)



(3)



(4)

(1) HYDRAULIC UNIT LABEL

(2) PRESSURE BAR HOURS

(3) PUMP MOTORS

(4) DISTRIBUTOR BLOCK

(5) LINEAR RULER

(6) REXROTH HYDRAULIC UNIT TOP VIEW



(5)



(6)